

ELECTROCOUP F3015

CONTINUALLY STRIVING TOWARDS PERFECTION



www.infaco-usa.com



INFACO THE COMPANY

In 1984, INFACO S.A. founded by our President Daniel Delmas, invented the world's first **electric pruning shear and called it the ELECTROCOUP**.

In 1985, at the SITEVI International Exhibition in Montpellier, Daniel Delmas won **the Golden Palm Award for Best Innovation** for his invention. INFACO sold its first 500 ELECTROCOUP shears during the three-day viticultural trade show.

Ever since, the ELECTROCOUP has revolutionized pruning practices in the viticulture industry around the world and has become a household name in the horticulture industry.

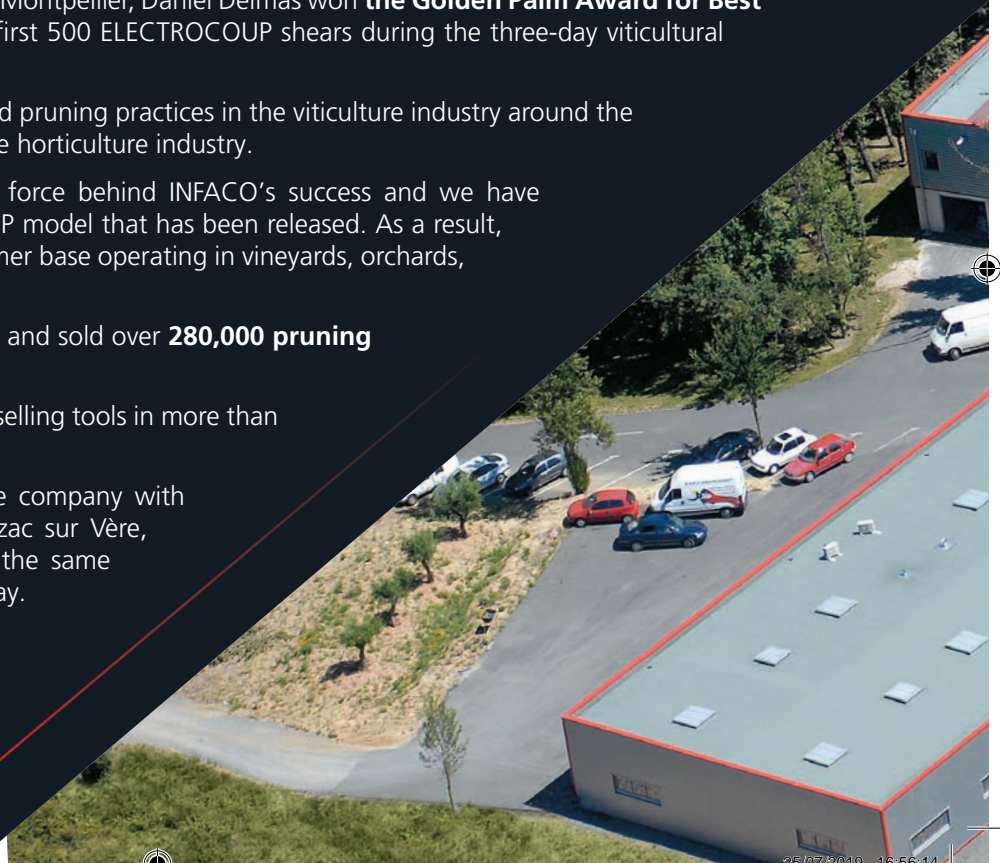
Customer satisfaction has been the driving force behind INFACO's success and we have continually strived to improve on ELECTROCOUP model that has been released. As a result, INFACO has an ever-growing and diverse customer base operating in vineyards, orchards, olive groves, parks and more.

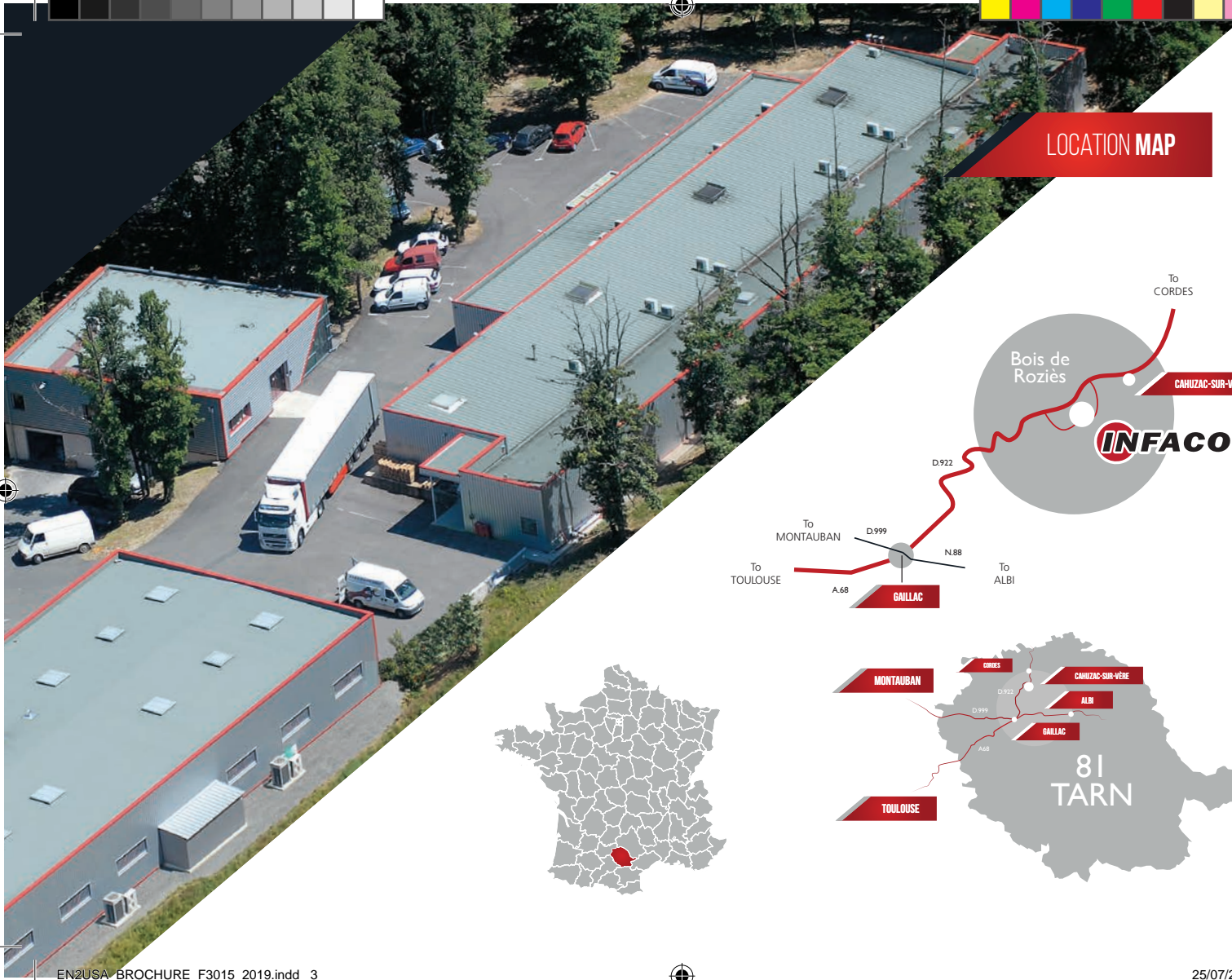
In its 30 years, INFACO has designed, produced and sold over **280,000 pruning shears**. The F3015 is our 8th generation shear.

Currently, INFACO is an international company selling tools in more than forty countries around the world.

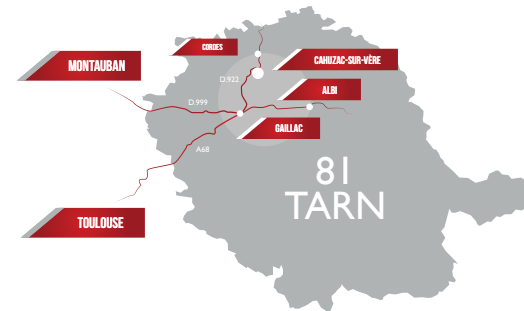
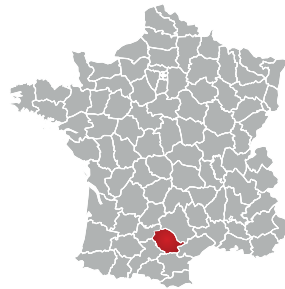
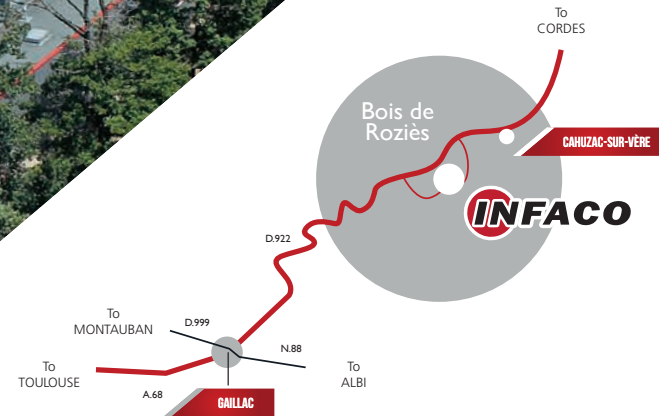
Daniel DELMAS and his son Davy still run the company with a staff of more than 100 employees in Cahuzac sur Vère, (South-West of France (81 - Tarn), driven by the same passion that's driven them since the very first day.

www.infaco-usa.com





LOCATION MAP



MANUFACTURER OF
PORTABLE ELECTRIC TOOLS
FOR OVER 30 YEARS



1984



1987



1989



1994



1999



2004



2010



2016

F3015: THE 8TH GENERATION OF ELECTROCOUP PRUNING SHEARS

Research & Development

INFACO has a very motivated, high-achieving design and research department setup at its headquarters.

In September 2005 an exclusive state of the art research & development facility was built.

In-house industrial designers, quality controllers and engineers strive to sustain the recognized strengths of the company and focus on **designing reliable and durable tools** of the future.

Once past its design stage, a prototype of the idea is developed and put through several tests for months before optimum results are achieved and implemented in future designs.

Our Driving Force: PASSION

A dedicated team, including Daniel DELMAS who invented the electric pruning shears in 1984, continuously strive to improve the existing line of tools and look to develop new cutting-edge portable electric tools.

6 years of research were spent perfecting the latest electronic pruning shears, ELECTROCOUP F3015, exemplifying the passion underlying the work of the whole research and development team.

In great secrecy the pruning shears were tested for two entire seasons in order to fully optimize their performance and reliability.

F3015: CONTINUALLY STRIVING TOWARDS PERFECTION

The ELECTROCOUP F3015 electric pruning shears will once again set new bench marks in the industry. A tool designed for pruning professionals, the F3015 has evolved from its predecessors to be a more reliable and high-quality tool, preferred by users throughout the world.

High quality materials have been selected with the utmost care in developing this new model. Our extended research and development has helped achieve an even lighter and more compact body. The new tool has been designed to run on a new brushless motor technology powered by a cutting-edge Lithium-ion battery.

The aluminium body (made of a special alloy used in aeronautics) holds and keeps together most components in the pruning shear and is now covered by a **lifetime warranty**.



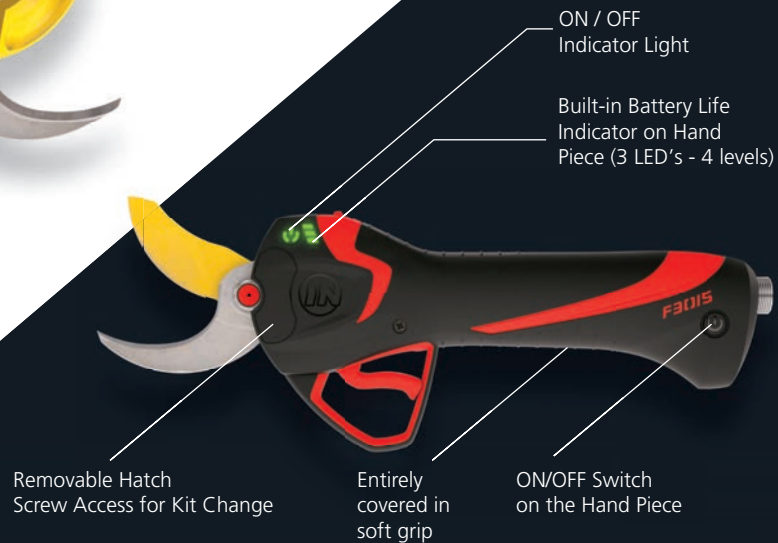
THE ALUMINIUM BODY IS COVERED
BY A LIFETIME WARRANTY



BVcert.6152145



- + Compact & Light: 1.74 lbs
- + Performance: Exceptional power and efficiency
- + High Cutting Capacity:
 - 40mm / 1.57 in. Standard Kit
 - 45mm / 1.77 in. Medium Kit
 - 55mm / 2.17 in. Maxi Kit
- + Ergonomic Design
- + Soft and Comfortable Grip
- + Very Accurate Progressiveness





Electronic Half-Aperture Adjustment

Choose easily from one of
10 preset positions to set your ideal half aperture setting.



Electronic Blade Overlap Adjustment

Optimize the life of your blades with
the new electronic overlap control system.
Choose easily from one of 10 preset positions to set
your ideal blade overlap.

2 operating modes: PROPORTIONAL and PULSE modes

PROPORTIONAL: Blade opens and closes progressively depending the action of the trigger.

PULSE: Blade either opens or closes at maximum speed depending on action of the trigger.

Number of Cuts stored
in the shears

Work Intensity stored
in the shears

ULTRA-COMPACT LITHIUM ION BATTERY

The Lithium-ion Cobalt battery weighs only 1.79 lbs. The storage cells of the battery have been chosen for their reliability and capacity to deliver intense current.

- + 120Wh LITHIUM Battery
- + Weight: 1.79 lbs.
- + Full-day complete autonomy 9hrs*
- + Battery with storage cells protection and management electronic system (BMS)
- + High storage capacity lithium cells. High power and long life intelligent battery technology.

5 YEAR PRO-RATED BATTERY WARRANTY

Contact your local retailer for the conditions of warranty.

*depending on the use and storage conditions



F3015 BATTERY VEST

CHOOSE HOW YOU CARRY THE BATTERY

The new vest provides a high level of comfort.

The light battery can be hooked onto the new vest and provides instant comfort when wearing.

The new F3015 battery can be worn in 4 different ways:

- 1- On our breathable vest
- 2- On our breathable belt
- 3- Clipped to the user's belt
- 4- Slipped into the user's pocket

AIRFLOW CONTACT SYSTEM

The new vest has been designed to optimize air circulation and significantly reduces perspiration.

The very small surface of the vest further reduces back perspiration.





INTELLIGENT AUTOMATIC CHARGER

Rapid charging: 90 minutes

The F3015 Lithium battery charger enables a 90% charge in 1hr.

Complete charge is obtained within 90 minutes (includes cell balancing).

The F3015 battery is sufficient for a full day's work.

The charger comes standard with two charging outlets (like the F3010). It is specially designed to power energy-intensive tools such as the pruning shear and Infaco's Powercoup PW2 line that includes a saw, hedge-trimmer, desuckering tool, and electric olive harvester.

Battery Sleep Mode function

Long Life Sleep mode: makes it possible to protect the battery during an extended storage period thus optimizing the battery's overall life.

Recharging is no longer required during the off-season. Just press the sleep button on the charger, charge the battery for a few hours at the end of each pruning season, and store in its case until next season.

TECHNICAL CHARACTERISTICS

	F3015 STANDARDNI KIT	F3015 MEDIUM KIT	F3015 MAXI KIT
Shear Weight	790g / 1.74 lbs	+ 70g / 2.5 oz	+ 480g / 1.06 lbs
Blade Opening	60mm / 2.36"	70mm / 2.76"	100mm / 3.94"
Cutting Capacity	40mm / 1.57"	45mm / 1.77"	55mm / 2.17"
Blade Point Speed (mm/s)	271.6	240	175.12
Blade Axis Torque (N.m)	184.3	223.2	360
Half-Aperture Function	YES (switch)		
Half-Aperture Adjustment	YES		
Blade Overlap Adjustment	YES		
Operating Mode	Pulse / Progressive		
On/Off Switch on the Tool	YES		
Built-in battery life indicator	YES		
Aluminium Body Structure	YES		
Injury Prevention System	YES (DSES option)		



Up to 2 seasons under warranty if the first service is performed.

The warranty extension applies to all of the F3015* parts, including the motor, gear set, electronics, sensor card, battery and charger.

*Excluding parts subject to normal wear and tear

BATTERY F3015	
Battery Weight	810g / 1.79 lbs
Weight of the Helix Cable	150g / 5 oz
Right Hand/Left Hand Adaptable	YES
Battery Average Autonomy	9hrs depending on use
Complete Charging Time	1 h 30
Battery Average Voltage	48 Vcc
Charger Feed Voltage	230 V 50 Hz 110 V 60 HZ
Sleep Mode Function	YES
Battery Compatible with Powercoup Line	YES
Warranty	12-month warranty (3 years for the motor and gear box, aluminium body covered by life warranty)

All the characteristics of our tools are given for information only. They are not contractually binding and may be modified by the manufacturer.

F3015: MUCH MORE THAN ONE TOOL

Like its predecessor, the electric pruning shear allows you to change the cutting head yourself, depending on the kind of work you want to do.

The tool's main asset is its versatility allowing the user to switch between the Standard, Medium and Maxi Kits.

It only takes 5 mins to change the kits to suit various cutting applications.

The only shears in the world with 3 interchangeable heads, adjustable half-aperture and DSES security system.

The F3015 is available from the factory in Standard or Medium versions.

3 HEADS FOR 1 TOOL

Easily change the cutting head to suit to your needs.



F3015 STANDARD KIT

Use on wood up to 40mm / 1.57"

Ideal for cutting vines and can be adapted for certain applications in tree pruning.

This kit has the best ratio between cutting rate and power.



F3015 MEDIUM KIT

Use on wood up to 45mm / 1.77"

With the Medium kit, increase the cutting capacity of your tool without sacrificing working speed. Specially designed for cutting small to medium sized branches.

Ideal for use in orchards, parks, and forestry work.



F3015 MAXI KIT

Use on wood up to 55mm / 2.17"

Specially designed for cutting medium to large size branches.

Ideal for coppicing vines and transforming fruit trees.

The Maxi kit will give your F3015 unrivalled cutting power and capacity.



F3015 **STANDARD KIT**



F3015 **MEDIUM KIT**



F3015 **MAXI KIT**



ADDITIONAL ELECTRONIC SAFETY SYSTEM

For 25 years, INFACO has been a pioneer in electronic injury prevention systems and is the only manufacturer to offer two electronic safety devices.

To offer safer solutions and always more innovative systems at reasonable costs, each year, INFACO devotes significant resources in Research and Development.



System certified by:



WIRED SAFETY SYSTEM DSES OPTION

The additional Electronic safety system, invented and patented by the company INFACO, is only compatible with the Electrocoupe pruning shears.

It is composed of a conductive glove connected to a specific DSES spiral cable. Wearing and working with the complete device increases the user's safety and reduces the risk of cuts.

As soon as the cutting head and the conductive glove comes to contact, the closing of the blade is immediately stopped and the blade returns to the open position, thus reducing the risk of an accident.

Unlike reinforced or metal-chain gloves, the special DSES gloves is less cumbersome thus ensuring high dexterity and comfort and makes working easier.

DSES has been certified by CTC, an organization authorized by the Ministry of Labour, Employment and Health*.

* (1) CTC authorized by a decree from the Ministry of Labour, Employment and Health, dated 20/12/2010 identified by N°0075, published in JOCE (Official Journal of the European Community), attributes: CE type examination certificate N°0075/1702/162/11/12/0903.

IMPORTANT: the glove must be connected to a DSES F3015 specific helix cable.

A table comparing the **DSES hard wired** and **DSES Wireless** systems is available from your dealer.



DSES WIRELESS OPTION



Only available for use on the **ELECTROCUP F3015** shears, this new wireless safety system is composed of a conductive trigger that makes the connection between the user's body and the shears' electronic system (patented system).

The **DSES WIRELESS** can be used bare-handed. As soon as the cutting head comes into contact with the skin, the pruning shears' blade opens instantly, thereby preventing accidents!

However, if you want to wear gloves to protect from the cold, the WIRELESS system imposes wearing **INFACO** conductive gloves, the glove worn on the hand carrying the shears and the opposite hand will not be the same.

The **DSES WIRELESS** system is especially suited to regions with low rainfall, to summer pruning in the arboriculture and landscaping sectors, as well as to pruning (for example: pruning orange trees during the dry season).



INNOVATION : CONDUCTIVE TRIGGER



A table comparing the **DSES hard wired** and **DSES Wireless** systems is available from your dealer.





48-VOLT **ELECTRIC SHARPENER**

SHARPEN YOUR BLADES IN RECORD TIME

Thanks to its 3-pad connection, the new A48v3 electric sharpener, is now compatible with **batteries of all ELECTROCOUP models F3005 – F3010 – F3015.**

It allows you **to save significant time on daily sharpening.** Optimize your blades for a higher yield from your ELECTROCOUP with the A48V3.

The sharpener can be plugged directly into the 48-volt battery to sharpen your blades making it portable and easy to carry.

SOLUTIONS ADAPTED TO HIGH PRUNING WORK

Like its predecessor, the F3015 can be used with any of its cutting heads on any of Infaco's carbon fiber extension poles.

The F3015 easily snaps into any of **the fixed or telescopic extension poles ranging between 47" to 11'5"**, giving a cutting reach of **up to 16.5 ft above the ground**.

The pruning shear is controlled by a micro switch housed in a sliding handle on the carbon fiber tube.

The shears can be operated by the user with a single cable between the battery and the pole.

Trigger control information is directly centralized by an electronic micro-card housed in the pole.

The tool's versatility will be appreciated by users doing large cuts or overhead work.



Mobile
Control System



Innovation: Electronic Micro-Card Housed
in the Pole



Fixed

P8F120 : 47" - 1.5 lbs
P8F210 : 6'10" - 2.2 lbs



Telescopic

P8T120 : 47" to 6'2" - 2.4 lbs
P8T210 : 6'10" to 11'5" - 3.3 lbs

A3MV2 48V ELECTRIC TYING MACHINE

A new A3Mv2.0 48V tying machine is now available, in addition to the 12V machine.

Once again this tool is compatible with all the Electrocoup batteries, including the new ultra-compact battery used by the F3015.



The A3M V2.0 is an electrical tying device that makes vine tying easy. For single or double Guyot (cane) training, this machine is highly versatile.

A soft steel wire is used for greater flexibility. Strong enough to hold until harvesting, it degrades easily after a year, around pruning time.

Wire is available in several gauges: 0.40mm (AWG 26), 0.46mm (AWG 25), and 0.50mm (AWG 24). Tying time is less than 0.4 seconds.



POWERCUP PW2

6 TOOLS IN 1

After inventing the 1st electric pruning shears in the world, more than 30 years ago, INFACO has now gained a reputation as an industry leader with its line of electric, hand-held tools.

Along with the launch of the new F3015, INFACO is proud to simultaneously launch its new POWERCUP PW2 multifunctional tool. The POWERCUP PW2 is lighter and more versatile than its predecessor. The new tool is comprised of a light-weight base unit that can attach to multiple heads and be used with or without extension poles. INFACO made significant changes to produce a multifunctional tool that merges several previously single-purpose tools into one incredibly versatile tool. For the first time ever, the Powercoup line now offers a chain saw head allowing for even broader applications for the tool.

1 Base = 6 tools: Chain saw, hedge-trimmer, reciprocating saw, desuckering tool, olive harvester, and flower thinner.

The PW2 handle is equipped with a flat motor using brushless technology without carbon.

The PW2 handle automatically recognizes each attachment and adjusts its speed accordingly.

Recognition of each attachment allows the motor to choose the best combination of power, speed, and torque for ideal performance.

The POWERCUP PW2 line can be used with all 48V INFACO batteries (F3005, F3010, Lithium F3015, and L810B).





PROFESSIONAL AFTER-SALES SERVICE

Infaco strives to provide an outstanding after sales service to its customers/users around the world. To do this, a special technical sales team is hand-picked by Daniel Delmas himself to oversee support operations. The team's mission has been to continuously provide technical assistance and training to INFACO's world-wide distribution network, allowing for fast, professional after sales support for end users.

FACTORY SERVICING

During the off-season, INFACO offers **annual servicing in its factory**.

A precise servicing and upgrading procedure is directly executed on each tool either by the manufacturer or one of its many authorized service agents.

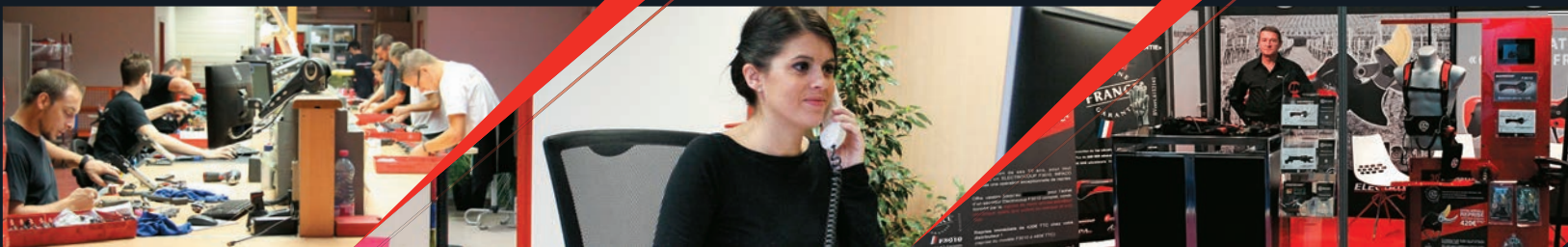
More than **35,000 servicing operations** are carried out each year with the help of the administrative, technical and marketing departments. Having your Electrocouple serviced each year allows for standard maintenance procedures to be carried out on the tool, ensuring proper functioning of the device when it really matters.

OUR DEALER NETWORK

Our distribution network will help you out with any information you need to know about your INFACO tools.

Our technical sales team works around the clock to provide quality assistance and support. When choosing an INFACO tool, you will enjoy a high performance product with plenty of options for local technical assistance through your authorized dealer.

INFACO works in close cooperation with its authorized distribution network. **Our dealers are the hub of INFACO's strategic organization** and help us provide you with quality products and services.





ELECTROCOUP

INFACO
Infaco USA, Inc.
2356 Research Dr.
Livermore, CA 94550
Tel: 1-800-425-8809
contact@infaco-usa.com

www.infaco-usa.com

YOUR LOCAL DEALER

Ref. : BC15 - USA - 2019



© 2019 Infaco USA, Inc. All rights reserved.