

# POWERCUP PW3

MULTI-FUNCTION TOOL



Bivolta 152145



**INFACO®**

# INFACO

After having invented the ELECTROCOUP, the first electric shears, in 1984, and after having designed, manufactured and sold over 300,000 electric shears, INFACO currently has a solid reputation in the battery-powered hand-held electric tool sector.

It was therefore natural that INFACO, the World Leader for this tool, decided to develop a line of battery-powered tools for the professional Park & Garden, Arboriculture, Wine growing and Oil growing sectors.

Using the same principle as the ELECTROCOUP shears, the motorized grip operates using an interchangeable head concept.

Therefore, the POWERCOUP PW3 is simultaneously an electric saw, an arborist's chainsaw, a hedge trimmer, an olive harvester and a lot more tools featured on our web site..

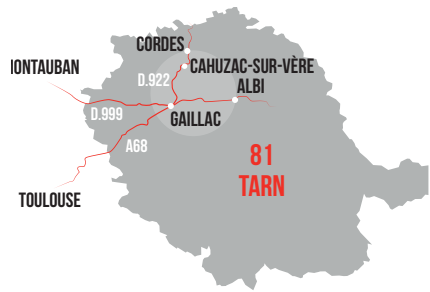
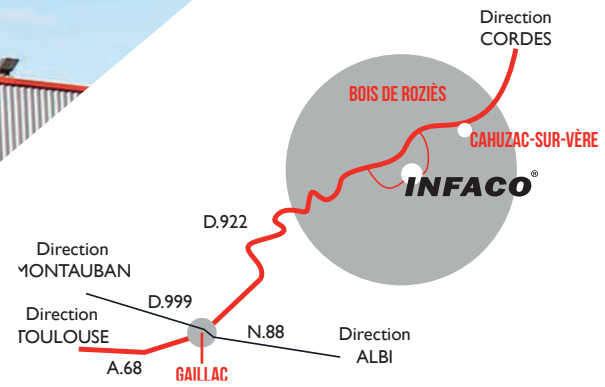
Designed and manufactured in France on our Cahuzac Sur Vère site (Tarn-Occitanie region), the PW3 grip has the Origin France Guaranteed label.

[WWW.INFACO.COM](http://WWW.INFACO.COM)





# ACCESS MAP



# 1 MULTIFUNCTION GRIP

Compact, easy to handle and lightweight, the POWERCOUP PW3 provides optimum work comfort.

Several different tools can be fitted to it using a rapid head fixing system.

Both silent and ecological, it makes it possible to carry out different types of maintenance in residential areas, on camp sites or in any other area where sound pollution is to be excluded.

The Brushless technology motor speed automatically adapts to the connected tool using electronic recognition.

This system is used to adjust the motor performance and thereby define the best power/speed/torque for the tool being used.





# THE **POWERCUP PW3** LINE



ARBORIST'S CHAIN SAW



SAW



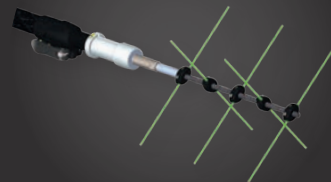
HEDGE TRIMMER



DESUCKERING TOOL



OLIVE HARVESTER



BLOSSOM THINNER



## CHAIN SAW **POWERCUP PW3**

Its light weight and its compact size make it easy to use. The tool is very easy to handle and guarantees fast cuts, one of its strengths. The arborist's chainsaw head, suitable for tree surgeons, can be used to cut diameters of up to 150 mm. It can also be used to prune grapevines as well as to restructure orchards.

- + Lightweight and easy to handle
- + Stop safety lever
- + Built-in lubrication pump
- + Automatic chain tension
- + 1/4 chain for quality cutting
- + Adaptable onto poles

	Hand-held	0.93 m fixed pole	1.83 m fixed pole	Telescopic pole 1.10 to 1.65 m
Weight	2.8 kg	3.4 kg	3.8 kg	4 kg
Max cut Ø	150 mm			
Power	1,392 W			
Chain pitch	1/4			
Guide	8" - 20 cm			

### FIELD OF APPLICATION



## CHAIN



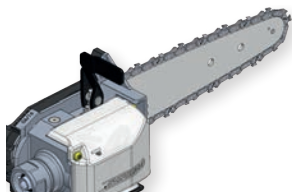
A chain has been selected that is specifically adapted to the PW3 grip performances. A  $\frac{1}{4}$  inch chain pitch and a 0.043" (1.1 mm) depth gage results in very clean cuts while limiting rebound effects.

## CHAIN GUIDE



The chain guide length is 8" (20 cm). At the end of the guide there is a return pinion used to limit wear on the guide and the chain.

## CHAIN TENSIONER



The chain tension is automatic and tool-free. The tightening lever guarantees that the guide is fixed in position and reduces the risk of it moving back.

## SAFETY LEVER



The emergency safety lever located in front of the carry grip makes it possible to stop the device at all times by simply flipping it forward. It can be removed for use on the pole versions. In order to prevent hand-held use of the machine without the safety lever, automatic lever presence detection is available.

## CHAIN LUBRICATION



A built-in, self-regulating lubrication system delivers the optimum quantity of lubricant needed to limit chain wear. INFACO proposes a lubricating oil specially selected for its performances and its biodegradability in excess of 90 %.

## EASY CARRYING



There is a ring behind the grip. It can either be used for storage when the tool is not being used, or as a fast attachment point for tree surges.



## POWERCOUP PW3SAW

The up to 100 mm diameter cut quality is exceptional (cuts identical to ELECTROCOUP shears). It thereby makes it possible to reduce the risk of wood disease when restructuring trees, as well as the number of shoots. Its ease of use and the absence of rebound risks makes the user's work more comfortable.

- + Lightweight and easy to handle
- + Blade changes without tools
- + High strength blade teeth
- + Very high quality cut
- + Adaptable onto poles

	Hand-held	0.93 m fixed pole	1.83 m fixed pole	Telescopic pole 1.10 to 1.65 m
Weight	2.4 kg	3.1 kg	3.5 kg	3.7 kg
Max cut Ø	100 mm			
Power	1,392 W			
Speed	3,200 Cycles/minute			

### FIELDS OF APPLICATION





## **/ CUT QUALITY**



The POWERCOUP PW3 saw cut quality is as clean as with Electrocoupe shears. It prevents the growth or spread of wood disease and reduces the number of shoots.

## **/ PRECISION WORK**



## **/ VERSATILITY**

Switch from a hand saw to a pole saw with a simple click thanks to the line of available fixed and telescopic poles.



It is easy to slide the blade between two branches without risking damage to the upper branch. This saw head is ideal for precision work requiring the best cut quality.



## POWERCUP PW3 HEDGE TRIMMER

The hedge-trimmer heads can be used to maintain all types of hedge. Very easy to use, easy to handle, silent and vibration-free, the "INFACO high performance blades" guarantee true professional work. Different lengths are available for the double version. This tool is very pleasant to use both for man-height work and for work at several meters from the ground.

- + Lightweight and easy to handle
- + Directional head
- + Adaptable onto poles

	Double sided 60 cm blade	Double sided 70 cm blade
Weight	3.4 kg	3.7 kg
Power	1 392 W	
Speed	3 200 cuts/min	
Right hand/left hand grip	yes	

### FIELD OF APPLICATION



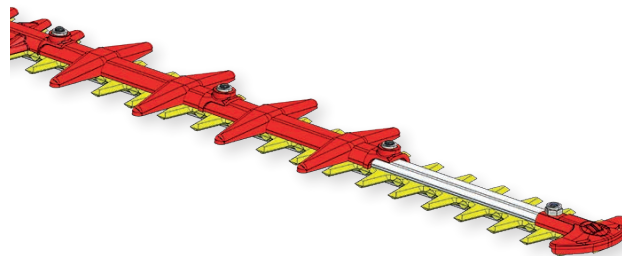


## **ANTI-REBOUND STOP**

An anti-rebound stop is available for double sided blades. This system protects the tips of the blades from impacts on the ground and/or walls.



## **DOUBLE SIDED BLADE**





## BATTERY COMPATIBILITY

All the POWERCOUP PW3 line tools are compatible with the ELECTROCOUP NiMh (F3005-F3010) and lithium (F3015 and L850B) batteries.

Tool autonomy (depending on use):

	F3010 battery	F3015 battery	L850B battery
Chain saw or saw	200 to 1,200 cuts <i>1,200 3 cm cuts 600 5 cm cuts 200 8 cm cuts</i>	150 to 1,000 cuts <i>1,000 3 cm cuts 500 5 cm cuts 150 8 cm cuts</i>	1,200 to 7,000 cuts <i>7,000 3 cm cuts 3,500 5 cm cuts 1,200 8 cm cuts</i>
Hedge trimmer	2 to 3 hours	1 to 2 hours	10 to 15 hours
Desuckering tool	4 hours	2 to 3 hours	2 and a 1/2 days
Olive harvester	2 to 4 hours	2 to 3 hours	13 hours
Blossom thinner	8 hours	6 hours	3 days



**F3015**BATTERY



**L850B**BATTERY

## POLE OPTION

The POWERCOUP PW3 grip can also be used with or without a pole extension for work at a height. Either fixed or telescopic, the tool is fully adaptable to your different tasks thanks to these pole lengths:



**FIXED** PW930P3: 93 cm - 700 g  
PW1830P3: 183 cm<sup>2</sup> - 1 kg



**TELESCOPIC** PWT1650P3: 110/ 165 cm - 1.2 kg







# POWERCOUP PW3 DESUCKERING TOOL

The grapevine desuckering head is an innovating alternative to the current desuckering solutions available on the market. Like all mechanical desuckering solutions, it eliminates the use of chemicals. The POWERCOUP PW3 desuckering tool brings flexibility, ease of use, quality and precision desuckering. Indeed, this hand-held power tool sets itself apart from the heavy hydraulic equipment that is very often expensive, complicated to use and requires experienced operators. Usable by all without any specific training, the POWERCOUP PW3 desuckering tool considerably reduces the discomfort of this task which is essential to the correct maintenance of grapevines.

- + Lightweight and easy to handle
- + Telescopic pole
- + Fitted with steel flyweights (rubber-coated option)
- + 10 configurable speed ranges

	Telescopic pole
Length	1.2 to 1.6 m
Weight	2.9 kg
Power	264 W
Speed	320 to 1,900 rpm

## FIELD OF APPLICATION





## **COMFORT OF USE**

Of a length adjustable from 1.2 to 1.6 m, the POWERCOUP PW3 desuckering tool makes it possible to avoid bending down throughout the day (over 4000 times per day) and therefore to have a very comfortable working position.



## **DESUCKERING QUALITY**



Electric desuckering is more selective than traditional methods. It reduces the number of regrowing shoots compared to chemical solutions, and increases yield by at least 30% compared to manual operations.

## **2 TYPES OF FLYWEIGHT**



Two types of flyweight (patented system) are available: in steel for the tougher shoots and rubberized for the younger grapevines.



## POWERCOUP PW3 ELLIPTICAL MOVEMENT OLIVE HARVESTERS

The olive harvester heads make it possible to optimize olive harvesting times, dividing them by 3 compared to manual harvesting.

The elliptical movement of the carbon fingers respects the plant in order to optimize following harvests and reduces the alternating phenomenon. Thanks to this movement, the olives fall less to the sides and are easier to pick up.

- + Lightweight and easy to handle
- + Silent
- + Respect of the plant
- + Tool compatibility

	V5000P3EF Static pole: 2.5 m	V5000P3ET Telescopic pole: 2.2 to 2.8 m
Weight	3.4 kg	3.9 kg
Power	720 W	
Speed	850 to 1250 rpm	

### FIELD OF APPLICATION





## **/ LIMITED DISPERSAL**



The elliptical movement olive harvester makes it possible to control the falling olives and thereby make collection easier. Moreover, there are 10 different speed settings available.

## **/ RESPECT OF THE PLANT**

The elliptical movement totally respects the plant and avoids branch snapping.

## **/ TOOL COMPATIBILITY**



The PW3 is the only multifunction grip that is compatible with an electric olive harvester and saw, chain saw and hedge-trimmer heads.





## POWERCOUP PW3 ALTERNATING MOVEMENT OLIVE HARVESTERS

The latest tool to come out of the INFACO workshops, the V5000P3A olive harvester is a revolution for the olive-growing industry thanks to its modularity and its capacity to adapt to any situation.

Using its alternating movement, the V5000P3A olive harvester will be a valuable ally for difficult harvests thanks to its perfect output and comfort of use.

- + Ergonomic
- + Balanced
- + Robust
- + Tool compatibility

	V5000P3AF Static pole: 2.5 m	V5000P3AT (available in late 2022) Telescopic pole: 2.2 to 3 m
Weight	3.2 kg	3.9 kg
Power	960 W	
Comb beats	850 to 1040 / min	

### FIELD OF APPLICATION



## **/ POWER**

The alternating movement olive harvester is comfortable to use and highly effective for your harvesting, there are also 10 different speed settings available.



## **/ OUTPUT**

Using the alternating movement olive harvester provides very high output.



## **/ TOOL COMPATIBILITY**



The PW3 is the only multifunction grip that is compatible with an electric olive harvester and saw, chain saw and hedge-trimmer heads.





## POWERCOUP PW3 BLOSSOM THINNER

The blossom thinning head is used by Arborists to mechanically thin out blossom, thereby saving an average of 60 to 70 hours work per hectare compared to a manual operation. The purpose of this operation being to optimize fruit size and ripening, it is essential for self-fertile species.

- + Lightweight and easy to handle
- + Accurate and selective
- + 10 configurable speed settings

	Telescopic pole
Length	1.5 to 1.9 m
Weight	2.9 kg
Power	264 W
Speed	320 to 1,900 rpm

### FIELD OF APPLICATION





## **/ RESPECT OF THE PLANT**



The brushing wires totally respect the plant while making the passage between branches easier.

## **/ EASE AND SAFETY**

The telescopic pole, from 1.5 to 1.9 m long, makes it possible to work safely from the ground.



## **/ CONFIGURABLE SPEED**

The speed can be programmed from 320 to 1900 rpm depending on the species, the plant and the intended result.





## POWERCUP PW3 WEEDER

The high frequency movement, battery powered weeder is the ideal solution for selective, effective and accurate mechanical weeding without destructuring the soil.

The INFACO weeder blades are effective while respecting the surfaces they work on. Their fast, alternating movements can accurately eliminate weeds without destructuring the soil.

Easy to handle, it deftly moves between plantations. Versatile, fitted with the wider accessories, it can quickly clean up large surface areas.

- + Zero CO2 emissions
- + Silent and effective
- + Respect of the soil

	PW3 (grip)	Tool holder (Weeder)
Weight	1.5 kg	2 kg
Power	1,392 W	
Speed	3,200 cuts/min	
Dimensions	230 x 160 x 180 mm	1480 x 215 x 230 mm
Rated	48 V	

### FIELD OF APPLICATION



## **/ EFFECTIVENESS**



The Powercoup PW3 weeder is 2 times faster than traditional manual weeding methods.



## **/ PEACE OF MIND**

Respectful of the environment, the weeder does not emit any CO2 and is very silent.



## **/ EASY HANDLING**

Due to its optimized weight distribution, the weeder is very lightweight and its ease of handling is record-breaking.





## POWERCUP PW3 HOE

Choose the battery powered hoe to loosen soil before planting and for deep mechanical weeding.

Its excellent soil penetration and height adjustability to adapt to all users make the hoe an ideal tool for simple and effective soil maintenance.

Combining silence and easy handling, the Powercoup PW3 hoe offers excellent comfort of use in all circumstances.

- + Zero CO2 emissions
- + Accurate and effective
- + In-depth work

	PW3 (grip)	Tool holder (P2)
Weight	1.5 kg	2.2 kg
Power	1,392 W	
Speed	200 rpm	
Dimensions	230 x 160 x 180 mm	1500 x 230 x 200 mm
Rated	48 V	

### FIELD OF APPLICATION



## **/ ACCURACY**

The Powercoup PW3 hoe combines effectiveness and accuracy to easily move between rows.



## **/ MODULARITY**

Different quick-change tool-heads make it possible to work at different depths or to weed on the surface.



## **/ PEACE OF MIND**

Respectful of nature, the hoe does not emit any CO2 and is very silent.







## POWERCOUP PW3 SWEEPING TOOL

The battery powered sweeping tool is the ideal solution for quick and effective ground cleaning thanks to its power and record-breaking rotating brush speed.

The tool perfectly removes leaves, soil and all debris while protecting the ground surfaces (easy cleaning of concrete, slabs and synthetic surfaces on small and large surface areas)

- + Zero CO2 emissions
- + Effective and silent
- + Suitable for all ground types

	PW3 (grip)	Tool holder (P3)
Weight	1.5 kg	2.2 kg
Power	1,392 W	
Speed	200 rpm	
Dimensions	230 x 160 x 180 mm	1500 x 230 x 200 mm
Rated	48 V	

### FIELD OF APPLICATION





## **/ COMFORT**

The Powercoup PW3 sweeping tool is significantly less tiring to use than traditional tools.



## **/ PEACE OF MIND**

Respectful of nature,  
the sweeping tool  
does not emit any  
CO2 and is very silent.



## **/ EFFECTIVENESS**

Combining ergonomics and ease of use, the Powercoup PW3 sweeping tool has very high performances thanks to the high rotating speed while protecting the treated surfaces.



# **INFACO<sup>®</sup>**

customer file

Bois de Roziès-BP2

81140 Cahuzac sur Vère – France

Phone: +33 (0)5 63 33 91 49 Fax: +33 (0)5 63 33 95 57

electrocoup@infaco.fr

[WWW.INFACO.COM](http://WWW.INFACO.COM)

YOUR DEALER

Ref.: PW3 - EN - 2021 - V1

